



Noble) HAPE

Non-invasive body slimming device

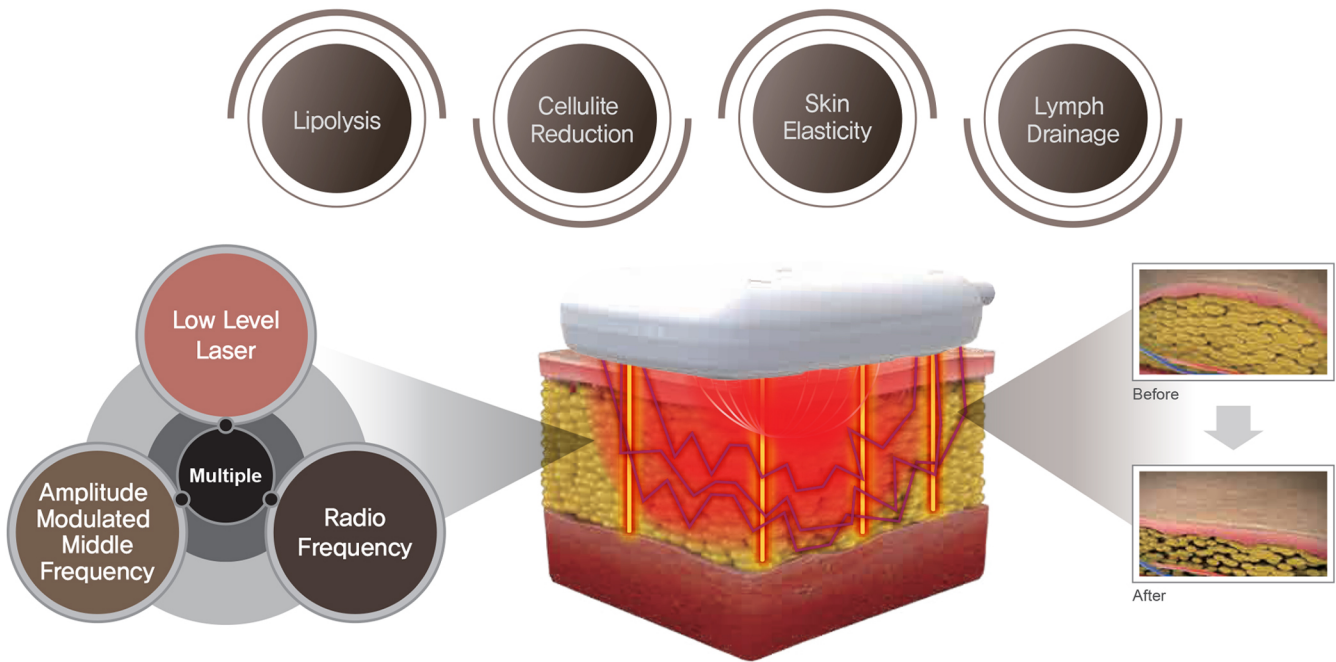
Make your line, live better life



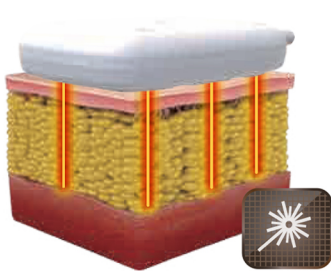
Potent Slimming Synergy Effects of Noble Shape

Solution for both fat and cellulite!!

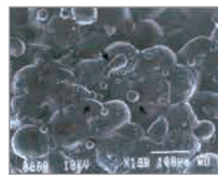
Eunsung is the best diet partner to provide solution for various obesity problems.



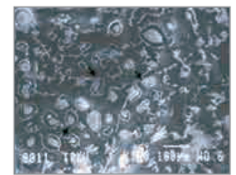
Low Level Laser



Healthy adipocyte



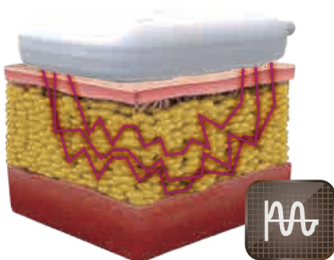
The cell membranes of the adipocyte creates a transient egress, allowing the triglyceride to leak out.



Emulsified adipocytes are completely disrupted (fat reduction).

Fat liquefaction: effect of low-level laser energy on adipose tissue, *Plast Reconstr Surg.* 2002 Sep 1;110(3):912-22.

Amplitude Modulated Middle Frequency



Course 1 Cellulite_30min

- Connective tissue elasticity
- Skin tissue regeneration
- Blood & lymph circulation

Course 2 Lipolysis_30min

- Promoting fat decomposition
- Blood & lymph circulation
- Vasodilation

Course 3 Body styling_30min

- Strengthen muscular connective tissue
- Muscle tension & relaxation

Course 4 Revital_30min

- Muscle activation
- Promote metabolism

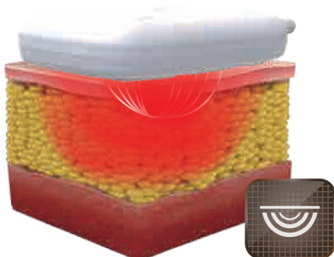
Course 5 Relax_30min

- Blood & lymph circulation
- Promote metabolism

Course 6 Lymph drainage_20min

- Blood & lymph circulation
- Vascular relaxation

Radio Frequency



Conductive RF energy applied externally by RF catheter to the skin surface causes heat generation via ion transfer of the body from cathode to anode. RF treatment is mainly characterized by the deep tissue heating at 42~45°C. The continuous deep heating results in reduced adipose cells and improvement of body contouring.

Why Noble Shape

There are multiple types of obesity. Different pattern of obesity development depends on individuals' diet habit, body shape, and genetic factors. Desired body line cannot be attained through a simple diet plan for weight loss.

In particular, for cellulite resulting from irregular skin network that is overly formed, a simple reduction plan of caloric intake does not work. To comply with such shortcomings, Noble Shape is developed to address multiple types of obesity.



Advantage

4 Channels and 8 Pad



Rapid treatment within 30 min



Noninvasive treatment



Automatically turns off at abnormal temperatures



Reduction of fat cells / Size reduction

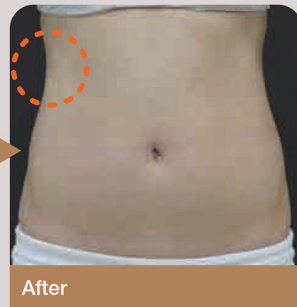
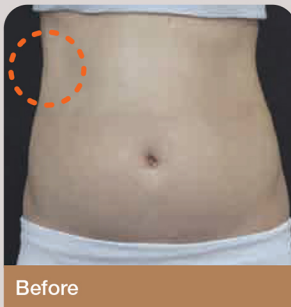


NO downtime



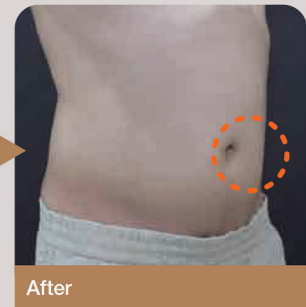
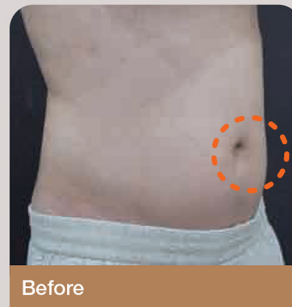
Proven Efficacy

Abdomen / 4 Session



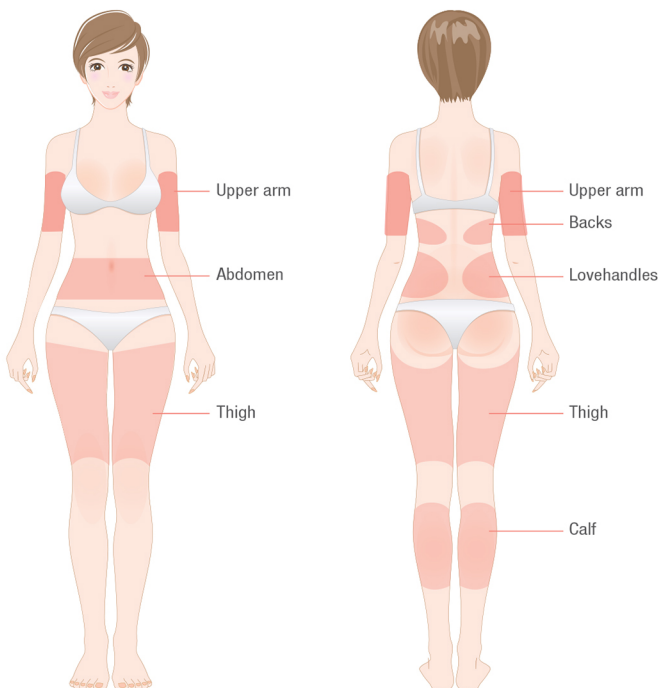
- The latter of 40's / Female
- Ultrasound scan after LLL, AMF, RF treatment

Abdomen / 6 Session



- The latter of 30's / Male
- Ultrasound scan after LLL, AMF, RF treatment

• Application sites



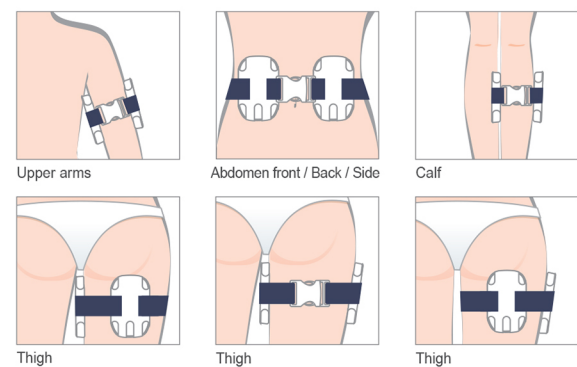
• Structure of Pad

Handpiece with three functions for complex management



• User guide

When wearing a Pad.





SPECIFICATIONS

Energy type	Low Level Laser : 658nm (40mW) Amplitude Modulated Middle Frequency: 1~4,000Hz Radio Frequency : 1MHz
Pads	Large x 4ea (95x163.1x2 3.7) Medium x 4ea (75x133.1x23.7)
Input Power	Voltage : 100~240V / Consumption Power : 300VA
Dimension (WxDxH mm)	Body : 394.6x482.1x264.3