



**innoPEX**

# GIAMOUR FREEZE



**Cool** MAX



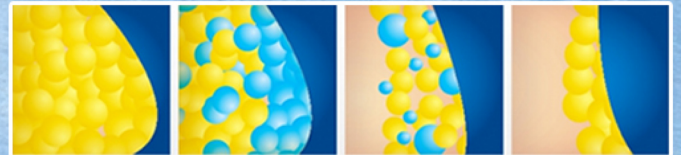
Patented constant  
pressure massage  
technology



Safety  
temperature  
control protection



Innovative  
Preheat Patent



**360°** surrounding Cooling technology

**-11°C** dissolve fat

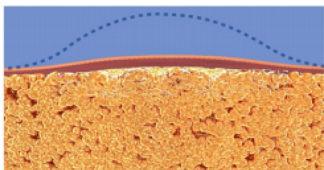
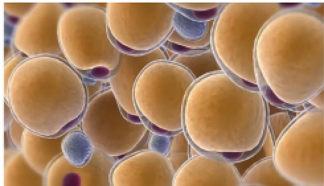
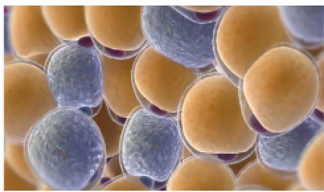
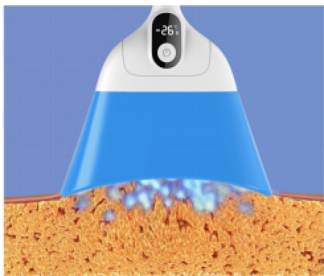
**20%** stronger suction

**24%** fat reduction in 1 session



# 5

## Innovative Design with Intelligent Handle



### ① Medical flexible LSR silicone cups

Whole shaped molding 360° cups, delicate and soft, comprehensive care for the skin.

### ② Innovative "Preheat" technology

Intelligent preheating system, heating first (up to 40°C) and then cooling (down to -11°C), soothing the body, safe and comfortable.

### ③ Vacuum negative pressure adsorption cups

Only acts on the cellulite in the cups without damaging other tissues.

### ④ Temperature monitoring technology

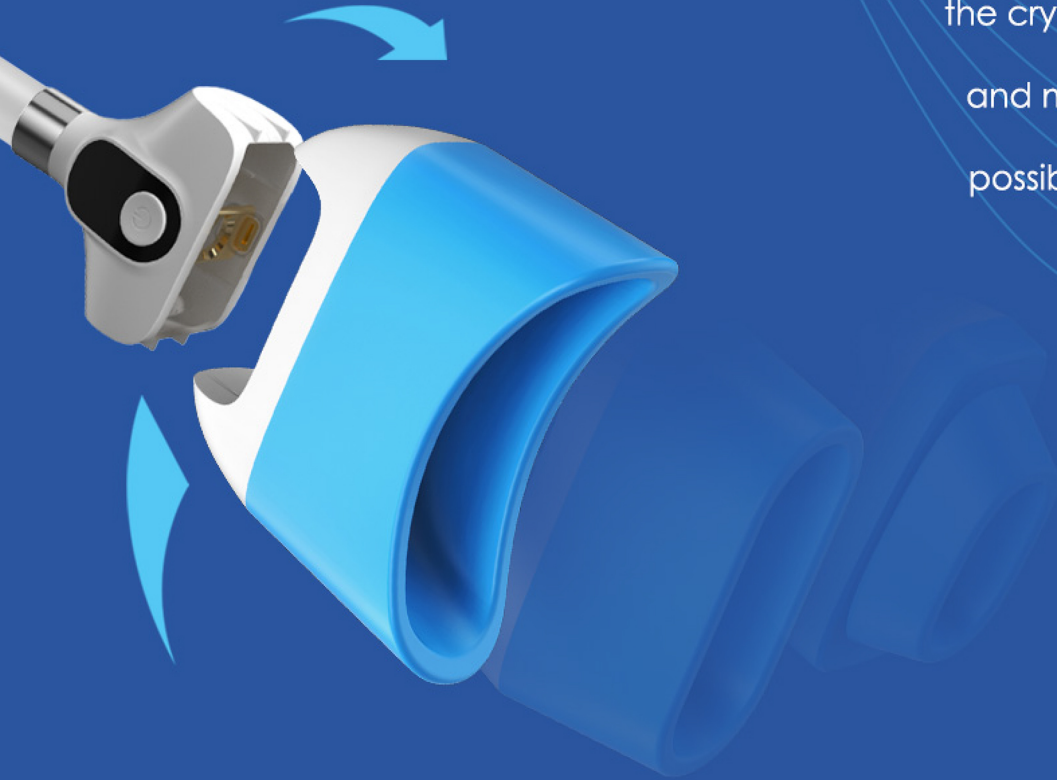
During the treatment process, the temperature change is intelligently sensed and displayed on the handle, helping to continuously monitor the temperature.

### ⑤ Intelligent positioning scanning technology

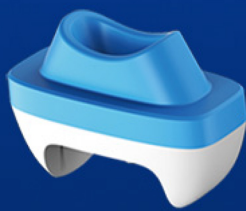
Precise positioning of the "cold feeling" is only reflected in the fat layer and does not affect other parts.

## FAST AND EASY APPLICATOR EXCHANGE

With a simple press-and-release mechanism, the cryolipolysis machine allows maximum convenience and makes switching cooling cups as simple as possible. Detaching cables or turning the system off is not required even during treatments.



## 7 IN1 MULTI-SIZE APPLICATOR



**Wing Mini**  
Double Chin,  
Axilla, Knees



**Flat Mini**  
Double Chin,  
Axilla, Knees



**Flat**  
Abdomen, Arms,  
Inner Thighs



**Wing**  
Abdomen, Flanks,  
Love Handles



**Wing Plus**  
Abdomen, Bra Line,  
Flanks, Love Handles,  
Below Buttocks



**Wing Max**  
Abdomen, Flanks,  
Love Handles



**Arc-T**  
Outer Thighs,  
Inner Thighs

# APPLICATORS OPTIMIZED FOR ANY TREATMENT

After laborious testing and research, each individual cooling cup has been ergonomically designed to adhere to each curve of the body. The cryolipolysis machine has been optimized to achieve desired outcomes from head to toe.

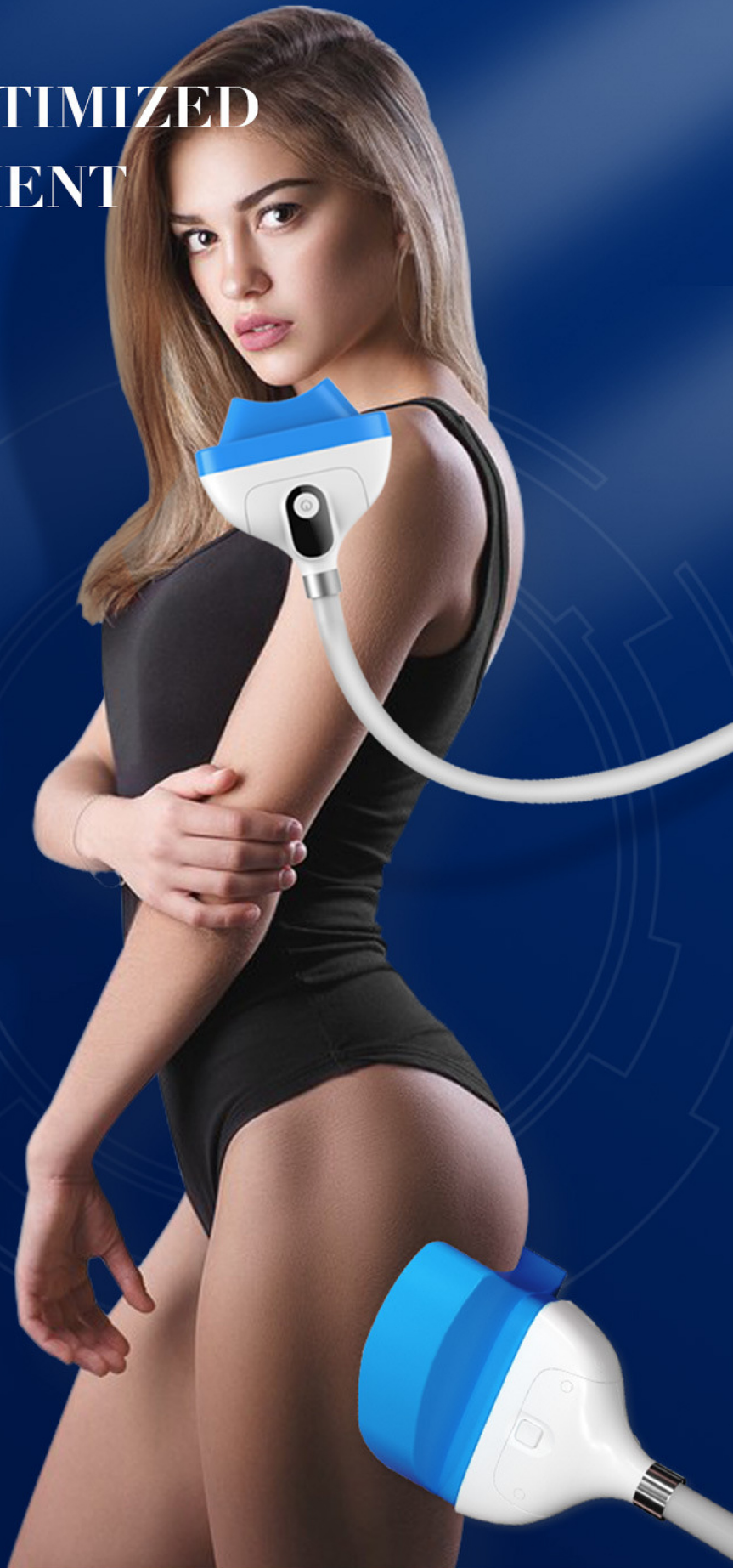
**NO RECOVERY PERIOD**

**NON-INVASIVE**

**NO PAIN**



Double Chin  
Axilla  
Arms  
Bra Line  
Abdomen  
Flanks  
Love Handles  
Below Buttocks  
Outer Thighs  
Inner Thighs  
Knees



# 4.0 VERSION APPLICATORS

Patented dual temperature monitor, guarantee safety and effectiveness.

A detailed cutaway view of the applicator, showing its internal components. The top surface is labeled '360°' with a dashed line and arrows indicating full rotation. A blue silicone pad is shown being applied to the top. Two 'Smart Temp Sensor' locations are marked with blue dots and callouts. The device has a white base and a blue upper body.

**360° Cooling**  
Best cooling and shorter treatment.

**Medical Silicone**  
Enhance treatment comfort.

**Smart Temp Sensor**  
Guarantee safety and efficacy.

**Smart Temp Sensor**  
Guarantee safety and efficacy.