



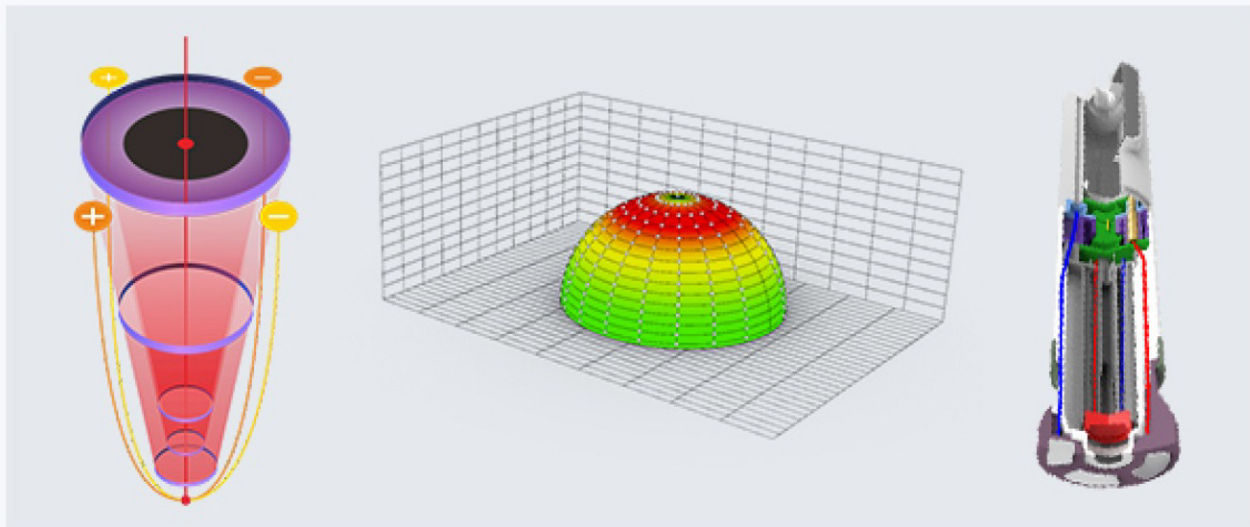
HIFU RF 2IN1 Machine

RSFU (RF & Synchronized High Intensity Focused Ultrasound)

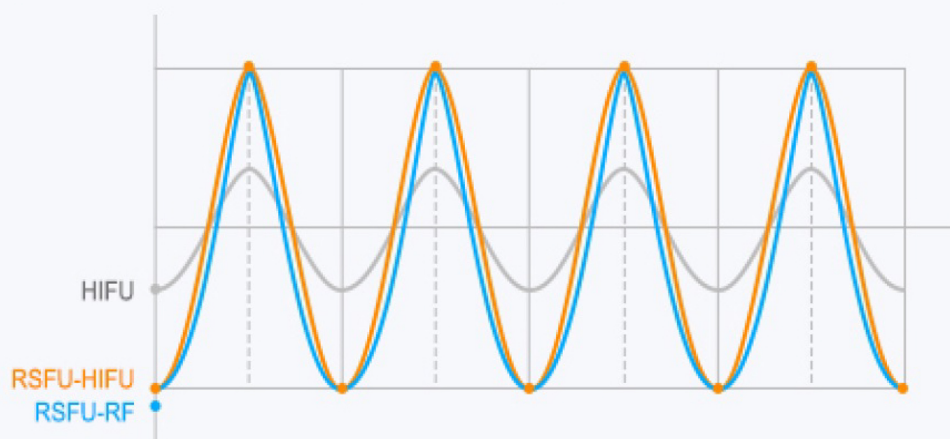
- Precise control
- Focused ultrasound
- Intelligent frequency conversion
- Trinity
- Automatch
- Synchronization instruction
- Multipolar RF
- Curve launch

Technical principle

RSFU(RF&Synchronized High Intensity Focused Ultrasound) Namely "RF & Synchronized High Energy Focused Ultrasound System". The multi-function probe incorporating "RSFU" high- tech is specially designed and developed for the realization of various face and body improvement applications.



The 4MHz transducer generates energy to produce a resistive electrothermal effect on the skin tissue, while the 10MHz ultrasonic transducer transmits ultrasonic energy to the dermis and fascia layers. The two energies form "one-dimensional condensation point", "two-dimensional radio frequency network" and "three-dimensional cross-electric heating effect" on the tissue. Innovative technologies can not only maximize customer comfort, but also experience the anti-aging effects of two anti-aging technologies.



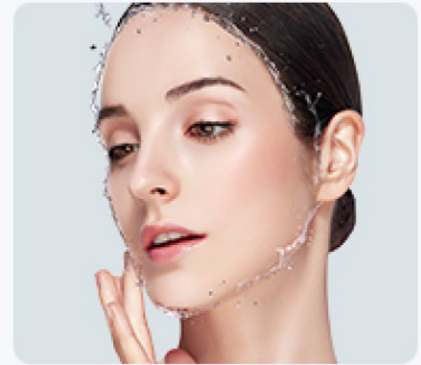
Instrument principle



Suspension lifting and tightening, instant lifting, apple muscle, tightening the mandible line, improving the nasolabial pattern and the puppet pattern;



Activate the regeneration of collagen and elastic fibers at the bottom of the muscle, increase the volume of facial soft tissue, and improve the lack of elasticity and dryness;



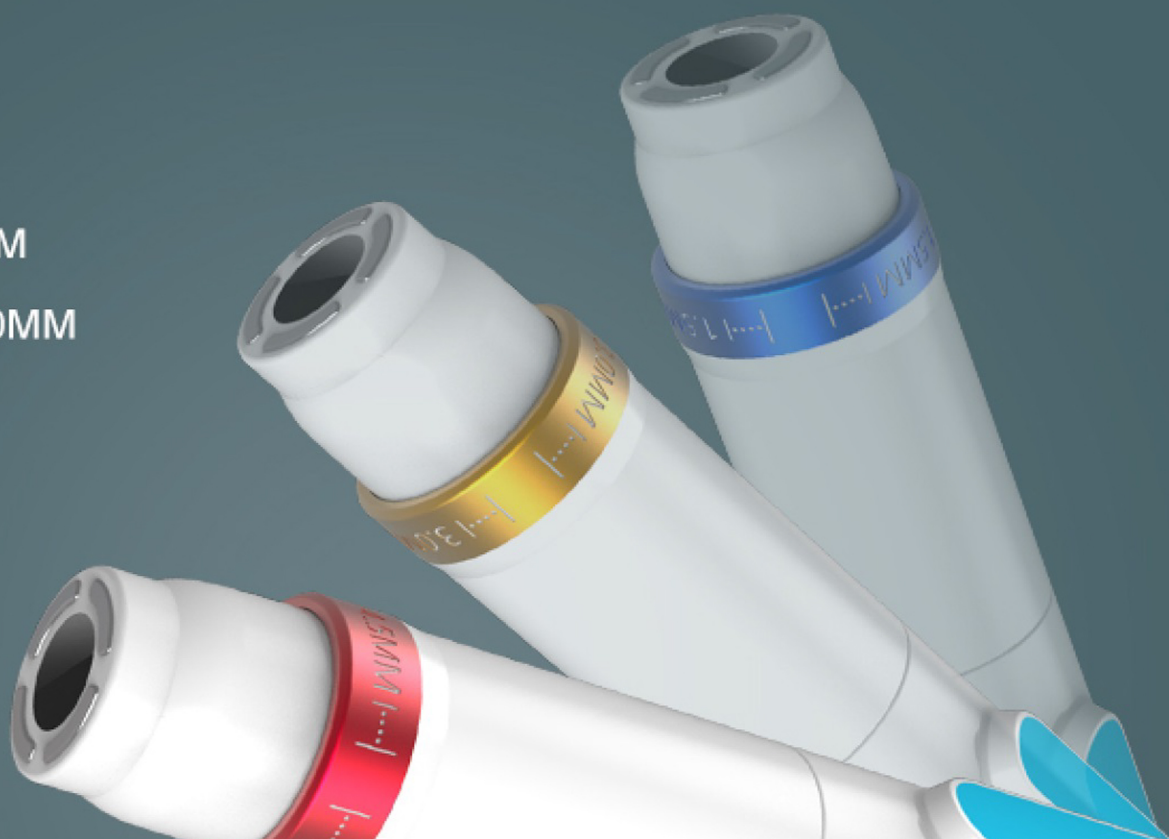
Improve cell activity, enhance cell metabolism and water storage capacity, and comprehensively improve skin tone and skin texture.

HAND TOOLS

The layered anti-aging sextet has a depth

 1.5/3.0/4.5MM

 8.0/10.0/13.0MM





1.5mm

For the superficial dermis, improve superficial fine lines, skin tone, skin texture, and pores.



8.0mm

Directly to the fat layer, dissolve fat cells to achieve body shaping effect.



3.0mm

Directly to the dermis to stimulate the continuous proliferation of collagen.



10.0mm

Directly reach the fat and fascia layer to achieve body shaping effect.



4.5mm

Directly to the SAMA fascia layer, tightening the bottom of the muscle to achieve firmness and improvement.



13.0mm

It can reach the deep fascia layer and muscle layer to achieve body shaping effect.

CORE SELLING POINTS

The world's latest RSFU radio frequency synchronization command high-energy focused ultrasonic technology



- Non-surgical treatment of face lift, firming and body contouring system;
- Non-invasive, safe, fast, comfortable and effective;
- The layered anti-aging sextet has a depth of 1.5mm, 3.0mm and 4.5mm, which can solve the problem of skin aging throughout the body;
- The depth of 8mm, 10mm, and 13mm can solve the problem of skin aging of the whole body, shape the perfect body, and restore the youthful state of the skin;
- The first lifting, the second firming, the third metabolism and the triple protection of fat-dissolving, one machine can solve all skin aging problems.